



## Data Collection with eWON – easy to use SEGNO eWON Data Mailbox Driver

---

### Situation – Remote maintenance and service

The support of hardware and software over long distance service and remote maintenance of computer-based systems, PLC systems and complex industrial plants is becoming increasingly important. The increased networking of industrial plants worldwide over the Internet and traditional telecommunication ways (DSL, LTE) enables direct assistance support through modern remote service.

### Why not additionally increase the added value for the customer?

- The first plant is sold to the customer by marketing and sales arguments
- The next plants are sold only through customer satisfaction and good service
- In addition to remote maintenance and remote diagnostics also set up a remote data acquisition
- information, alarms, measurements for preventive maintenance
- Many data for many different evaluations

Data mailbox is an eWON Talk2M service for storing eWON variables and alarm history data, such as an answering machine for technical equipment using the eWON flexy series. The eWON Flexy station actively sends the information from the stations to the Data Mailbox running on Talk2M servers. Through strong encryption, authentication and data integrity, the safety requirements are met. The historical data is stored with a time stamp temporarily (10 days) and can be accessed via a web API.

### What we offer you

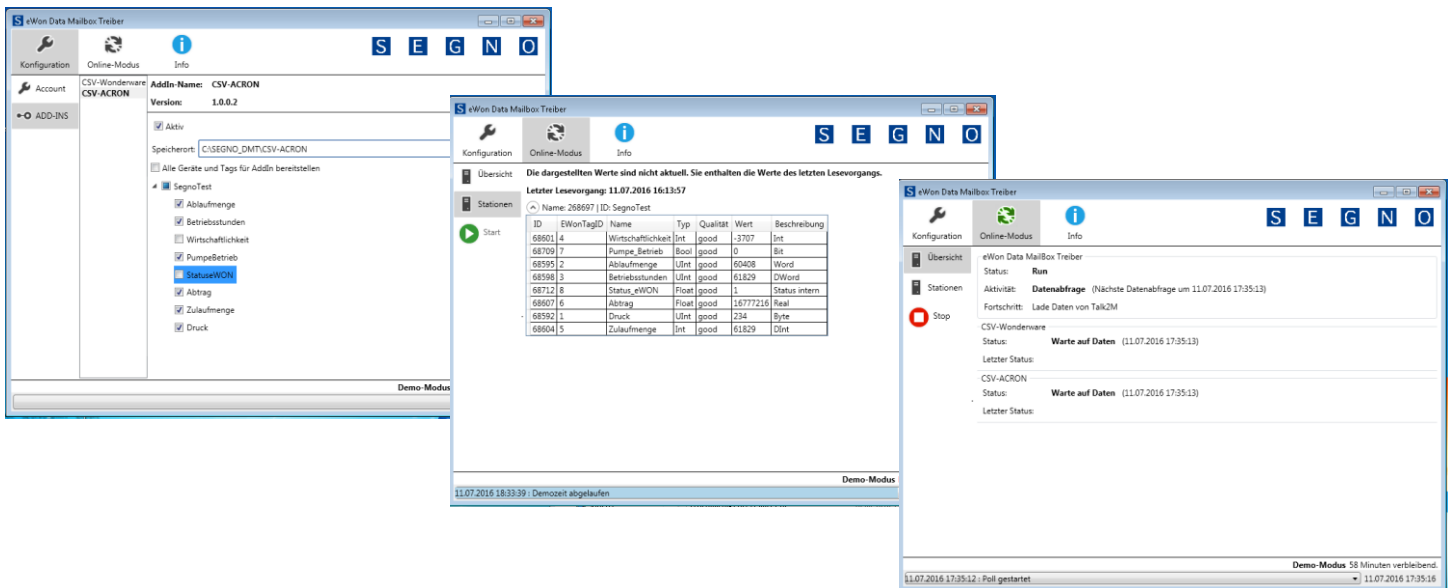
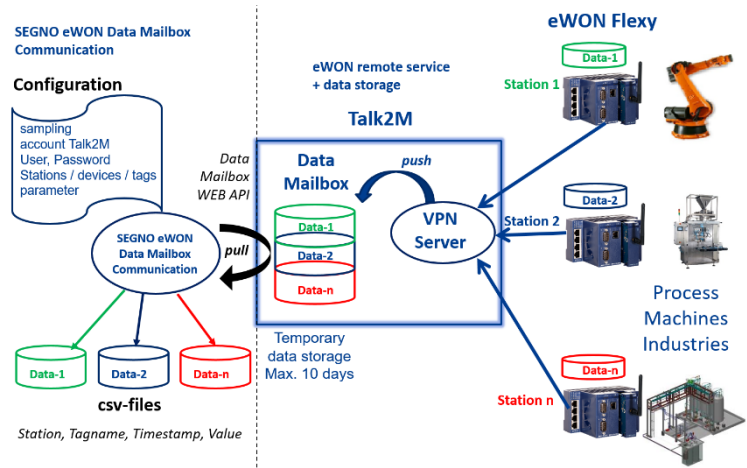
Based on this Web API from eWON Talk2M application, SEGNO has developed a standard solution for operators, end users and system manufacturers to collect data quickly, easily and comfortably and save them to a Microsoft Windows computer.

The SEGNO eWON Data Mailbox solution is scalable on the number of stations and variables, so that the solution can be adapted to any customer requirement. We also offer individual support and assistance in the implementation of solutions.

## Your benefits

### SEGNO eWON Data Mailbox Driver:

- ✓ pulls automatically data from the Data Mailbox
- ✓ is a ready scalable solution
- ✓ easy configuration
- ✓ can run as a service in the background
- ✓ is supported by a technical team
- ✓ supported Historical Data Logging and Alarm Logging
- ✓ supports many interfaces (CSV, XML, SQL, etc ...)
- ✓ easy installation on any Windows computer with Internet access
- ✓ redundancy by using two independent systems possible
- ✓ uses the same IT Security mechanisms such eWON Talk2M (HTTPS)
- ✓ strong encryption, authentication, and data integrity
- ✓ Functions and interfaces can be customized



**Free 30 days trial version  
Interested? Contact us!**

Tel: **+49(0) 421 792 88 - 0** or E-Mail to: **info2016@segno.de**

**or RETURN-FAX to +49(0) 421 792 88 - 22**

Company: \_\_\_\_\_

Name, Function: \_\_\_\_\_

Telefon: \_\_\_\_\_

E-Mail: \_\_\_\_\_